

Hontza

Plug-in microwave motion and daylight sensor

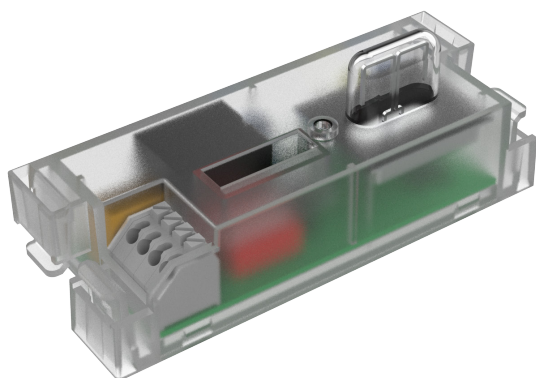
Override ON/OFF



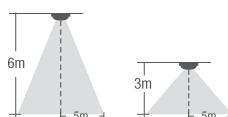
Uni-Remote Compatible



- Unique mechanical design allows for easy installation of the sensor
- Mounting height up to 6m
- Super compact design
- Sensor setting with DIP switch or Uni-Remote
- Modular design for Kosnic linear luminaires



Detection Range



Detection area	Detection radius Walking speed: 1 m/s H: 6m	H: 3m
100%	5m	5m
75%	4m	4m
50%	-	3m
25%	-	2m

	1	2	
ON	I	-	25%
	II	ON	50%
	III	-	ON 75%
	IV	ON	ON 100%

Detection area

Detection area can be reduced by selecting the combination on the DIP switches to fit precisely each application.

	3	4	
ON	I	-	5s
	II	ON	1min
	III	-	ON 5min
	IV	ON	ON 30min

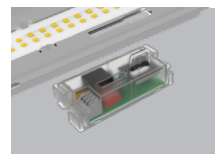
Hold time

Refers to the time period the lamp remains at 100% illumination after no motion detected.

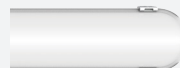
	5	
ON	I	ON 30Lux
	II	- Disable

Daylight Sensor

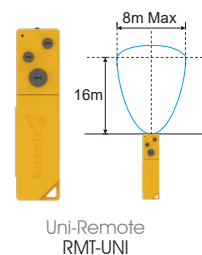
The sensor can be set to prevent illumination when the ambient light is above the daylight threshold. When set to disabled, the sensor will switch the light on when presence is detected regardless of the ambient light level.

5 Years
Product Warranty


Recommended product



Niva CCT	↪ P217
Kennet CCT	↪ P229
Trent Plus	↪ P255
Trent 3	↪ P257
Trent On Farm	↪ P261
Trent On Site 2	↪ P263
Avon 5	↪ P248
Avon Power	↪ P252



General Specification

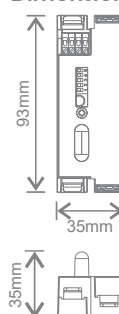
Voltage	110-277Vac
	50/60Hz
Detection angle	150°
Transmitting power	≤0.5mW
Operation Temp	-25°C to 60°C



Order Code

HON-M

Dimensions



Order Code	Installation Height	Control Output	Trade Price
------------	---------------------	----------------	-------------

HON-M (RMW-AC)	6m	ON/OFF	£31.13
-------------------	----	--------	--------

Accessory

Order Code	Description	Trade Price
RMT-UNI	Universal Remote Control	£18.15