

Installation & Operating Instructions: AUT PIRSW

360° Ceiling Surface Mount PIR Switch



DESCRIPTION

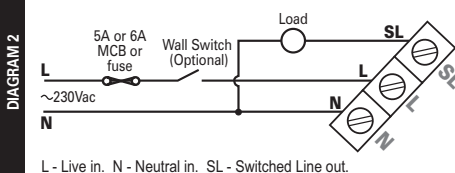
This Surface mounted PIR switch is suitable for mounting onto a back box at least 16mm deep. Configurable for any room occupancy style, via Time and Lux level adjusters. It switches on the lighting load if the area is occupied and if the ambient lux level is less than the chosen adjusted level (10 to 1000 lux). It switches off the lighting load if the area is unoccupied for the set time (up to 40 minutes). It is also suitable for non lighting loads by setting the lux adjuster to the maximum point.

INSTALLATION

To be installed by a competent person with reference to BS 7671. Make reference to the Precautions and Technical Details sections overleaf. If in doubt consult a qualified electrician.

- Plan where the PIR is to be located (see diagram 1).
Switch off supply and check for hidden cables and pipes.
Fix a suitable back box to the ceiling.
- The PIR should be connected as shown in diagram 2:
L - Live in. N - Neutral in. SL - Switched Line out.
- Secure the PIR onto the back box ensuring no wires are trapped.

Suggested typical wiring



- Ensure the Time adjuster is set to minimum and Lux to Photocell inactive (maximum), making reference to diagram 3.
- Turn on the supply and any in-line switch (providing override off) and check the operation of the PIR.

OPERATION

When the power is switched on, the PIR will switch on the lighting load for 1 minute then switch it off. After 3 seconds it will switch on again if it detects movement and the room is deemed dark enough. With Time set to minimum the load will stay on for 10 seconds so the detection range can be easily assessed.

CEILING with PIR switch

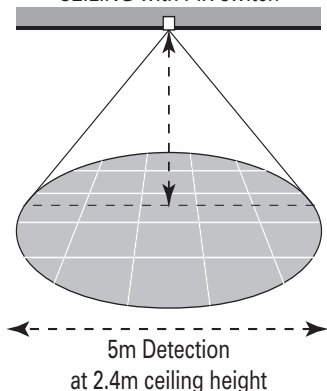
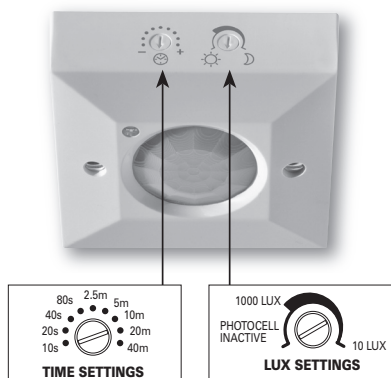


DIAGRAM 3



PLEASE READ THESE INSTRUCTIONS BEFORE INSTALLING THE PRODUCT

Installation & Operating Instructions: AUT PIRSP

LUX SETUP

Note: For loads which should turn on regardless of ambient light levels, set Lux to maximum (Photocell inactive).

It is best to set Lux when the ambient light level is at the required minimum level.

Set Lux to the minimum and wait for the load to switch off.

Without shadowing the PIR (from daylight), slowly increase Lux whilst waving your hand below the PIR until the lighting load switches on.

TIME SETUP

The Time adjuster should be set appropriately for the usage of the area, for example some possible settings could be:

Offices with workers regularly walking 20 minutes

Offices with mainly desk based workers 40 minutes

Corridors 5 minutes

Washrooms with total coverage 10 minutes

Washrooms with entry coverage only 40 minutes

2D fittings* 20 minutes (min)

* Not less than 20 minutes due to potential lamp failure. If in doubt contact your lamp manufacturer.

With Time set to maximum (40 minutes) it halves at each point as moved towards minimum i.e. From max to min: 40, 20, 10, 5, 2.5 minutes, 80, 40, 20, 10 seconds.

PRECAUTIONS

- Do not place the PIR near heat sources, fans or in ventilated ceiling voids.
- These PIRs can be wired in parallel (sharing the same Live, Switch Line and Neutral) however:
 - Some lamps emit Infra Red radiation, if these are nearby and switched via another PIR switch the PIR may false trigger.
- Do not place close to, or positioned such that, any light source points directly into the PIR.
- Ensure wires and cables are securely held within the connection terminals.

- Do not connect on a circuit with large inductive loads, as induced spikes may cause false triggering or damage the PIR.
- The PIR should be protected by a 5 or 6 Ampere mcb or fuse.
- **Disconnect the PIR from the circuit before performing insulation testing of the wiring circuit.**

TECHNICAL DETAILS

Voltage:	220 - 240Vac, 50Hz
Loading:	1000W of Resistive loads 750W of Fluorescent loads 750W of Transformer loads 750W of CFL, LED and 2D lamps
Minimum load:	2W resistive, suitable for most energy saving lamps, LEDs and emergency fittings
IP rating:	IP20
Detection range:	360 degrees with 5m diameter when mounted at a 2.4m ceiling height
Time:	10 seconds to 40 minutes in 9 steps
Lux:	10 to 1000 lux and maximum (photocell inactive) at the PIR switch.

3 YEAR WARRANTY

This Surface mounted PIR switch comes with a 3 year warranty from the date of manufacture and is CE marked.



IF YOU EXPERIENCE PROBLEMS WHICH CANNOT BE RESOLVED BY THE TROUBLE SHOOTING PAGE PLEASE RETURN THE PIR TO YOUR SUPPLIER WITH DETAILS OF THE FAULT, LOAD AND APPLICATION.

autenco
AUTOMATIC ENERGY CONTROL



www.autenco.co.uk